



IT SOLUTIONS CATALOG

C  RR - DEFENSE

SOFTWARE DEVELOPMENT

Custom
software

Web
Design

UI & UX

Apps

QA &
Testing



PHOTOGRAMMETRY

Aerial Image Acquisition

Using drones, photographic images of the terrain or area of interest are captured.

Image Processing and Analysis

Specialized software and algorithms are employed to analyze and process the photographic images, extracting precise information about the shape and dimensions of objects in the real world.

Creation of Maps and Digital Terrain Models

The images and information obtained are used to create highly accurate and detailed maps and digital terrain models.

PHOTOGRAMMETRY

Generation of Geographic Information Products

Maps and digital terrain models are utilized to generate geographic information products, such as thematic maps and 3D visualizations, for use in specific software applications.

Topographic Surveys

The images and information are used to conduct precise and detailed topographic surveys of the terrain, including altitude, shape, and terrain features.

Inspection and Monitoring of Infrastructure

Images and information are used for inspections and monitoring of the condition of infrastructure such as roads, bridges, buildings, and others.



PHOTOGRAMMETRY

Terrain Change Analysis

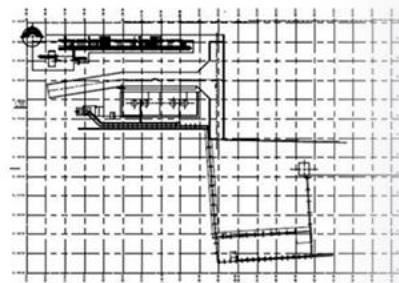
Images and information are used to analyze changes in the terrain over time, detecting changes in vegetation, land use, and more.

Environmental Impact Assessments

Images and information are employed for environmental impact assessments, evaluating the impact of projects or activities on the environment..

PHOTOGRAMMETRY

Piping and Instrumentation Diagram (P&ID)



PLANO DE LOCALIZACIÓN

SIMBOLOGIA:

- [illegible]

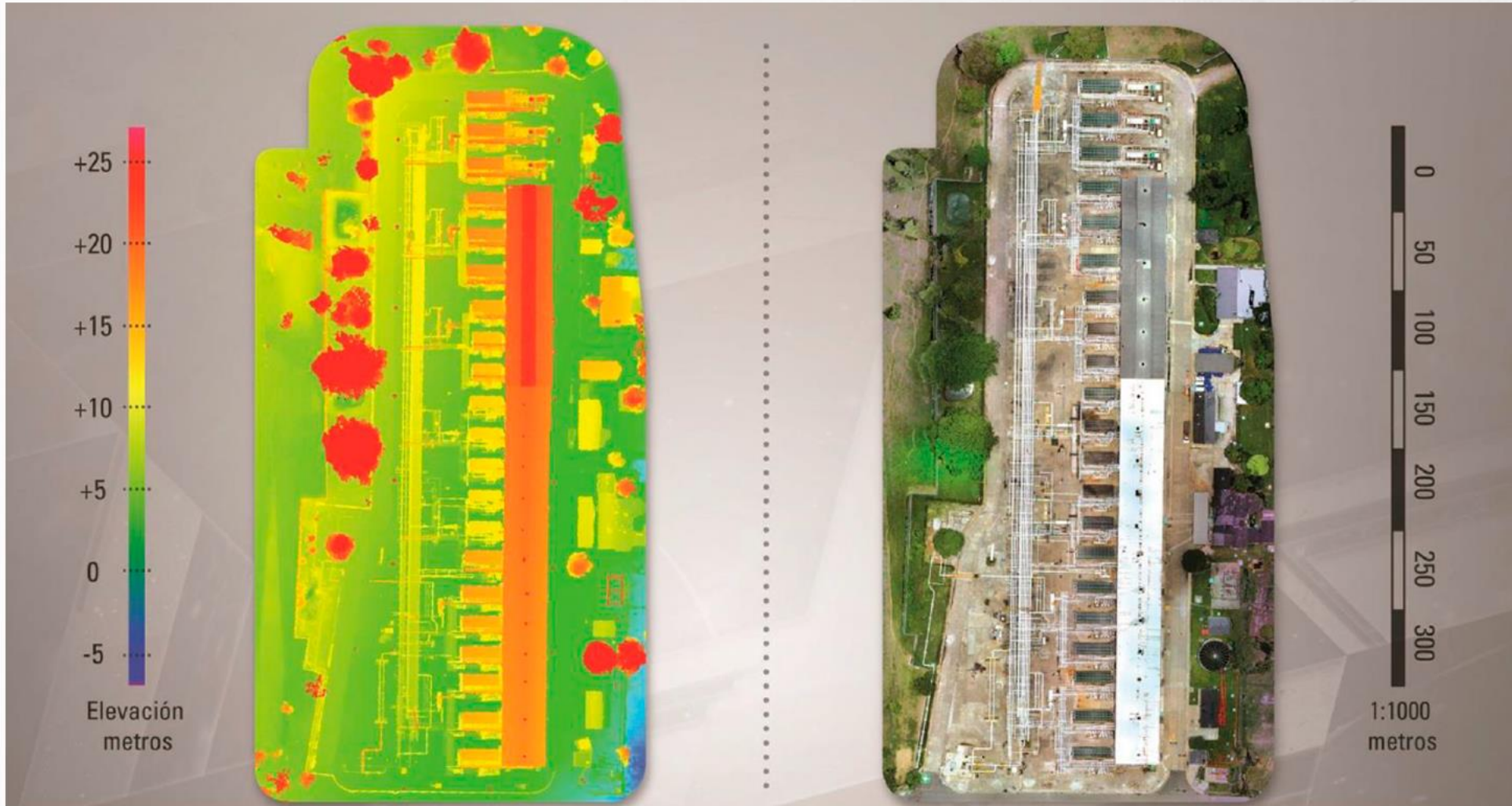
NOTAS:

- NOTAS:**
- 1.- DIMENSIONES EN CENTÍMETROS, EXCEPTO INDICADAS
 - 2.- NIVELES EN METROS
 - 3.- DIÁMETROS EN MILÍMETROS
 - 4.- LAS COTAS RÍGIDEN AL DIBUJO
 - 5.- LAS COORDENADAS ESTÁN EN METROS Y SE TOMARÁN DEL PROYECTO ANTERIOR EXISTENTE
 - 6.- ESTE PLANO ES SOLO DE REFERENCIA, TODOS LOS NIVELES, COTAS Y MEDIDAS



Photogrammetry

Elevation Map

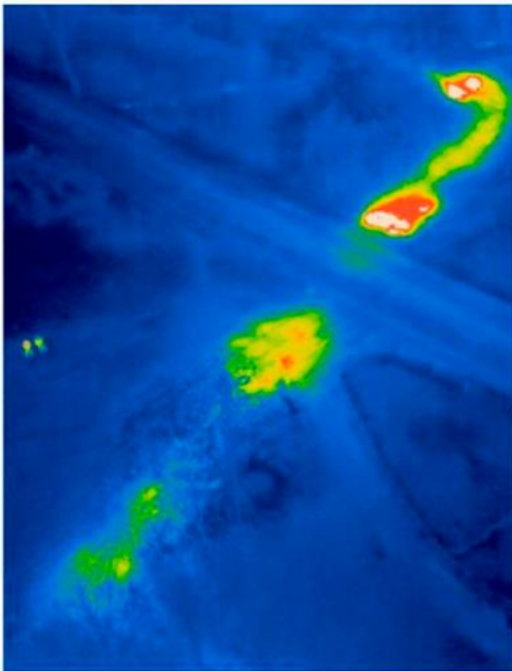


Photogrammetry



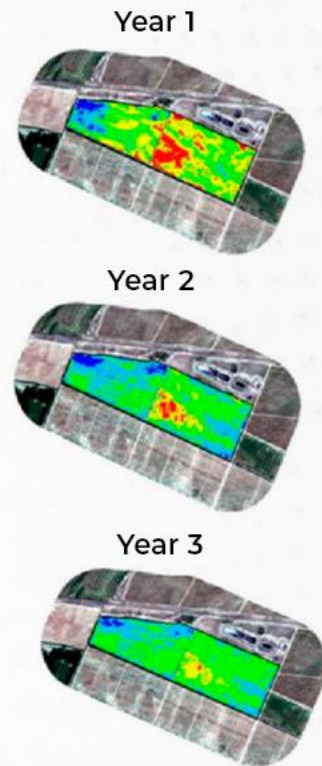
Thermography:

- Image
- Video



NDVI Environmental Analysis:

- Spill Impact
- Compensation Scope



Pipelines:

- Milepost Validation
- Location



*PDF, AutoCAD, GIS, Large Format Laminated Printing



2001 Timberloch place
#500The Woodlands, Tx 77380



info@corr-defense.us



corr-defense.us